

interact



Connected lighting made easy with Interact Pro

Interact Pro app and portal for small
and medium-sized businesses

Find out more about Interact
www.Interact-lighting.com

Contents

04 **Welcome to Interact Pro.**
See what it's all about.

09 **Hassle-free set up.**
Five simple steps are all it takes.

06 **Bright benefits for all.**
Uncover the value for you and your customers.

10 **Using the Interact Pro app, portal and dashboard.**
Save time and money by reducing unnecessary steps.

08 **Where to use Interact Pro.**
Install Interact Pro in a variety of settings.

14 **Hardware that's easy to install.**
Choose Interact Ready connected lighting.

interact Pro

Expand business opportunities and improve efficiencies with the Interact Pro connected lighting system: intuitive, user-friendly Interact Pro app and portal plus robust Interact Ready luminaires, retrofit kits and lamps. It enables wireless connectivity benefits by removing current barriers for adoption.

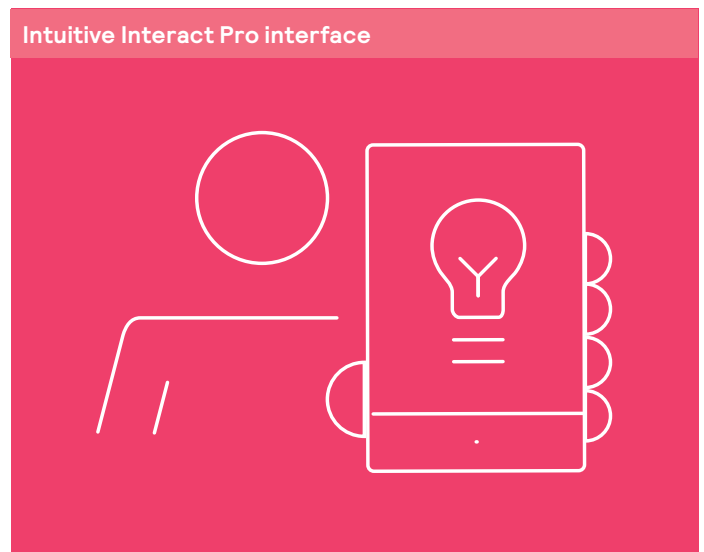
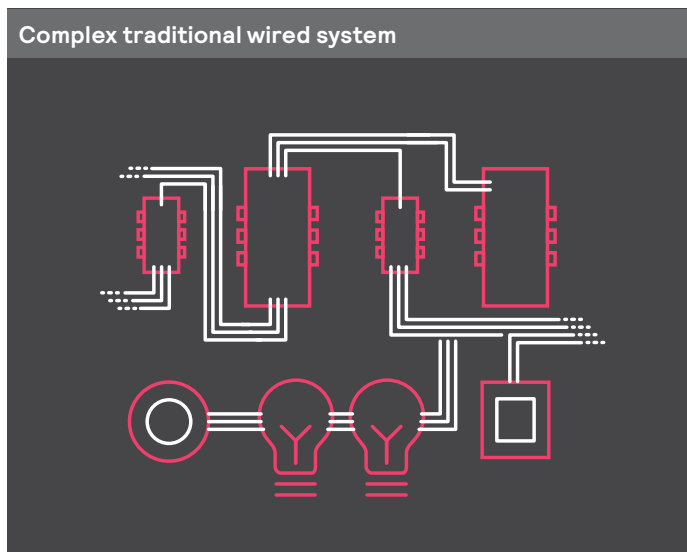
Lights. Insights. Action.





The simple way to connected lighting

This game-changing connected lighting system consists of Interact Ready light sources wirelessly integrated with the Interact Pro app and portal. Installation doesn't require extra cabling or IT support, so you can complete jobs quickly and without hassles.



How the connected lighting system comes together

Interact Pro software

Interact Pro gateway

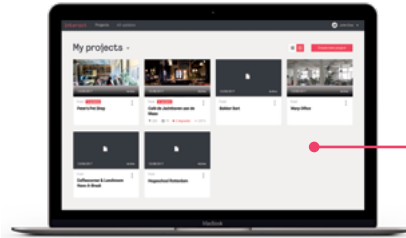


Each gateway controls 200 light points and a total of 50 sensors and switches. Multiple gateways can be used at a customer site for multiple floors, areas, and adjoining structures.

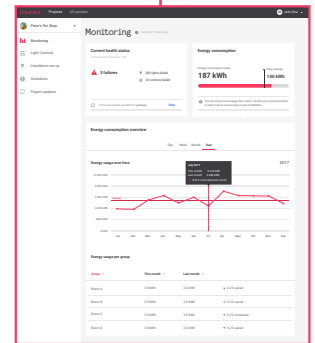
Interact Pro app



Interact Pro portal



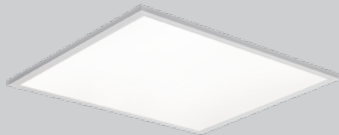
The left navigation side bar provides quick and easy access to the monitoring (energy consumption analysis), light controls, schedule and project update dashboards.



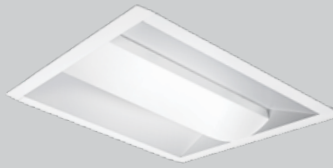
Interact Ready lighting



Wireless connected lighting with smart luminaires, smart retrofit kits, and smart lamps.



Smart luminaires*



Smart retrofit kits



Smart lamps



Smart sensors



Smart wall-switches

* Smart luminaires include selected product lines from Lightolier, Day-Brite and Ledalite



Success starts with the Interact Pro connected lighting system

The challenge with today's connected lighting adoption for small to medium sized businesses is the up-front costs of hardware, ongoing cost to serve and complex install steps with additional technical resources required. Our solution provides far more than illumination, and as lighting enters the digital world, the potential is limitless. This is where Interact Pro provides value to both you and your customers.

- True Wireless system featuring a kinetic wall switch and Zigbee 3.0 wireless light point communication
- Fast, easy installation and invaluable service opportunities
- Personalized light with optimized energy savings
- Access to insightful data over the lifetime of the install
- Qualifies for DLC's Networked lighting controls energy rebates

How does Interact Pro help you?

Interact Pro delivers the power of IoT with the ease of a wireless system of lights, sensors, and switches. The intuitive Interact Pro app guides speedy set-up and opens up a new world of multifaceted possibilities for relighting and new construction projects.

Easy to install and set-up

The fast gateway, mobile app and cloud-based portal setup does not require extra cabling or system programming by a technician. Interact Pro opens the door to opportunities out of reach due to cost and complexity with its fast commissioning time.

Reliable and robust

Interact Pro is designed with a holistic approach to system security that includes secure architecture, development, deployment and lifecycle process. Distributed control and encrypted communication across devices and the cloud using latest security protocols (TLS) makes the system even more robust.

Long-term, low-risk solution

The user-friendly app and dashboard monitors the health of your lighting components and provides performance and maintenance data to optimize energy savings with potential energy savings of up to 79%* resulting in lower capital and running cost for business owners.

Effortless compliance

Meets stringent code and ASHRAE compliance, qualifies for DLC networked lighting controls rebate programs to earn the highest level of Utility rebate potential.

*Based on the case study "Pelling Marketing by Design"





Wherever you work, it works

Interact Pro is the ideal enabling and personalized technology to simultaneously support the success of your customers and your business. This energy-saving connected lighting system is especially suitable for small- to medium-sized businesses, such as offices, schools, warehouses and retail locations. Each gateway controls 200 light points and a total of 50 sensors and switches. Multiple gateways can be used at a customer site for multiple floors, areas, and adjoining structures.

Guide your customers into the empowering connected lighting world while growing your business.



Office and School



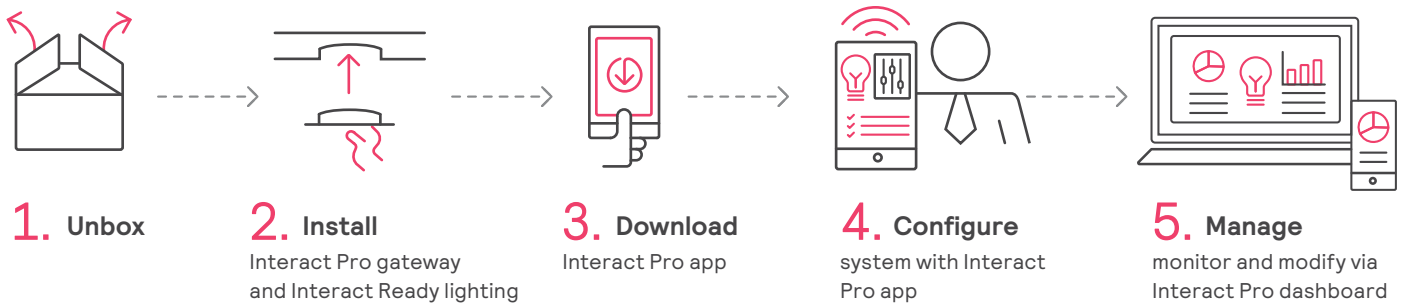
Industry



Retail

Get connected in 5 simple steps

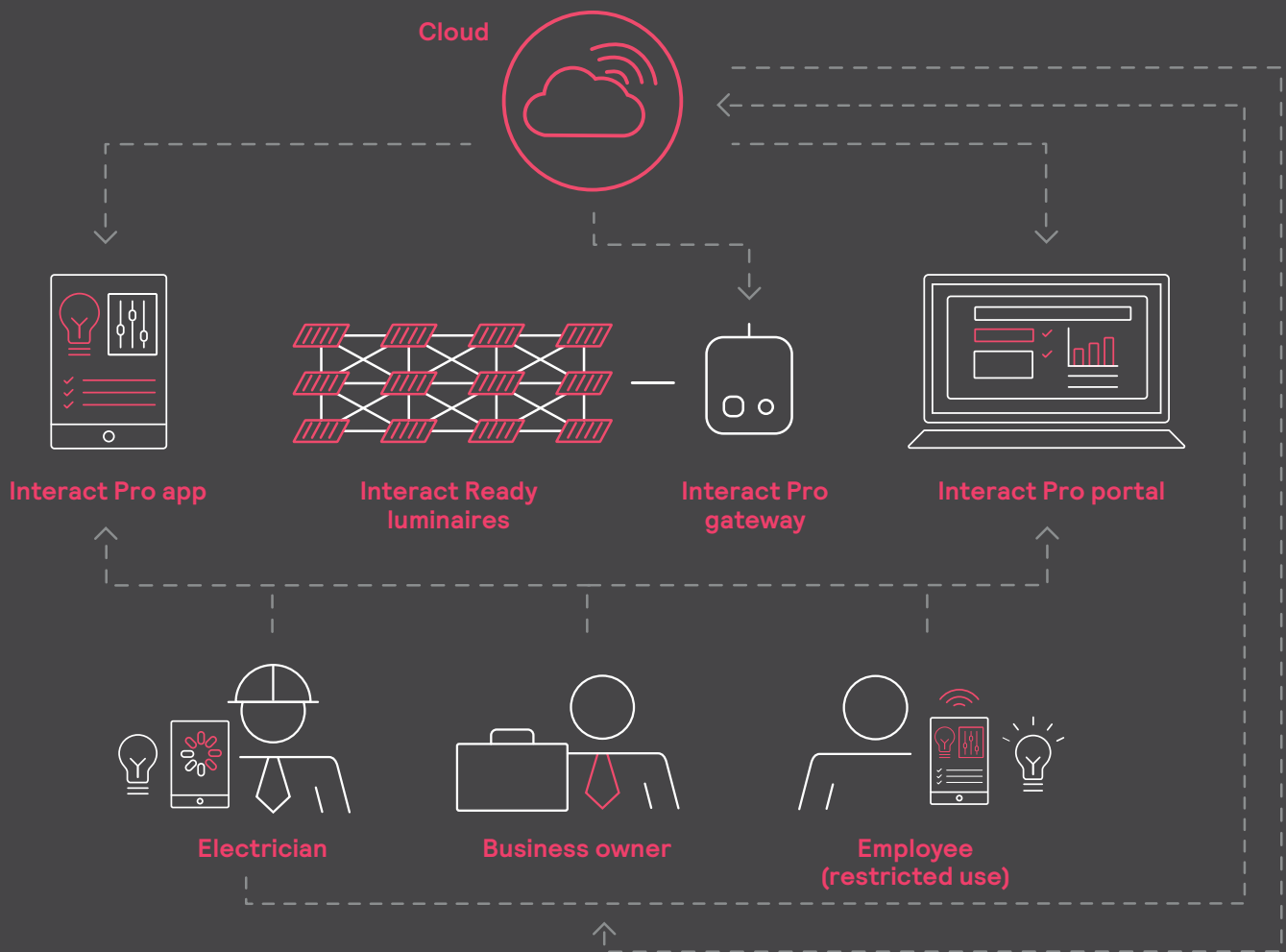
With our easy 5-step process, the cloud-based Interact Pro connected lighting system is ready to provide energy savings, insightful data and much more.



Users control the lights, scenes and schedules through a downloadable Interact Pro app on enabled portable devices. Add a wall-mounted smart switches for added convenience in the entire space.

The Interact Pro gateway connects the lighting network with the cloud and stores the user commands and settings to our patented transceiver in each lighting unit in the ZigBee 3.0 mesh network.

Interact Pro at a glance



Discover the power of Interact Pro's connected lighting system

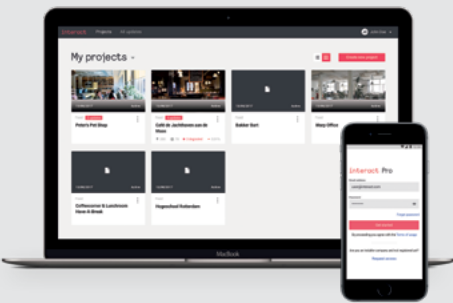
Interact Pro opens up a new world of multi-faceted possibilities for relighting and new construction projects. Imagine providing customer value through productivity-strengthening personalized light settings along with enhanced energy-saving measures and access to real-time data for streamlined business efficiencies.



Interact Pro wireless gateway

Key features

- Connect up to 200 light points, and a total of 50 sensors and switches
- Compact size allows for discreet installation
- Connects to the Internet via Ethernet cable



Easy set up with the Interact Pro app and portal

Remotely set-up projects, groups, and zones reduces time at site.

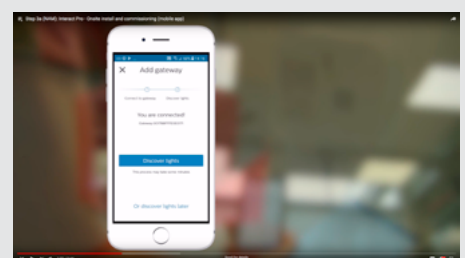
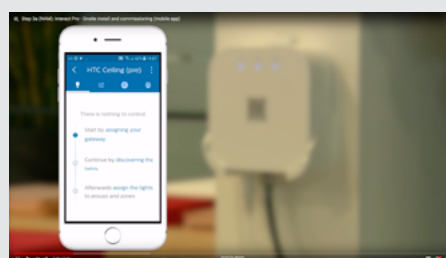
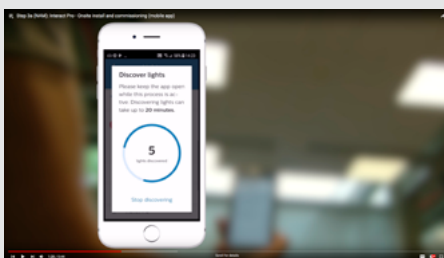
Wireless commissioning by the contractor without expert assistance.

Key features

- Quick remote creation of groups, zones, scenes and schedules with on/off/dim and other customization
- Linked light source and accessories information
- Quick remote creation of groups, zones, scenes and schedules with on/off/dim and other customization
- Lighting scene management
- Lighting scheduling
- Energy consumption information

To learn more, visit our Interact Pro step-by-step install series at:

<https://www.interact-lighting.com/en-ca/what-is-possible/interact-pro>



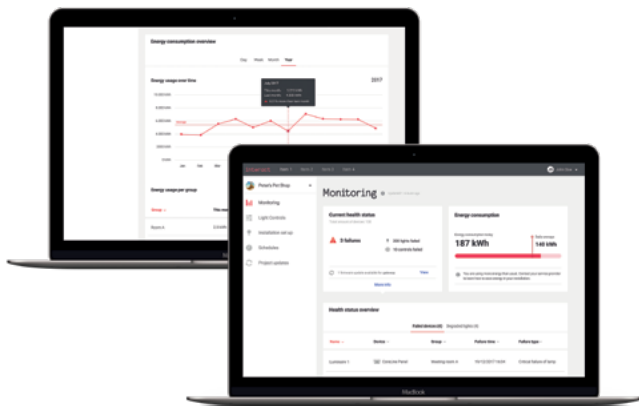


Broadest portfolio and true wireless connected system

Key features

- End to end system reduces integration issues and high maintenance cost over life
- Connected lamps and retrofit kits simplify renovations
- Reduces complexity **by removing** the need to pull control cables
- Simply connect to power and **program wirelessly**, lowering installation costs

Achieve the highest level of rebate potential with DLC Network Lighting controls qualification



Interact Pro dashboard: Remote Energy reporting and lighting management

Key features

- Remotely monitor consumption over time
- Remotely monitor light point failure and reduce site visits for maintenance work
- Remotely change scenes, schedules or user access



Personalized lighting

Key features

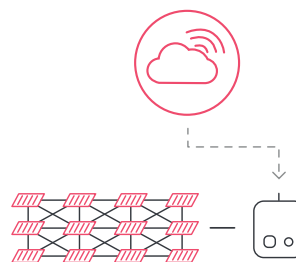
- Provides **users** the ability to individually control their lighting environment to improve visual comfort



Service tags in every light

Key features

- Light information accessible via remote portal for on-site servicing throughout the lifetime of the installation
- Enables accurate maintenance planning



Distributed control

Key features

- Reliable and continuous lighting operation during no connectivity to internet or loss of power to gateway



Dedicated call center and trained partner network

Key features

- Connect directly to support team (1-833-INTRPRO)
- On site support via partner network across Canada

Cost to serve has never been better

Interact Pro enables service providers (electrical contractors, ESCOs and facilities teams) to manage and monitor the installation remotely without the need to visit the site saving multiple trips to the site, thereby improving the efficiency of their operations and increasing their productivity.

Interact Pro portal (no subscription needed):

- Overview of user-specific customer installations
- Educational information including user guides, white papers, how-to's and more
- Updates and announcements

Interact Pro dashboard (subscription-based):

- Receive real-time system status and alerts to quickly identify and respond to issues
- Identify and act on preventative and unexpected maintenance needs
- Remotely access rich product information for each installed device, enabled via Service Tag app
- Identify and order parts as needed
- Prepare and manage projects, while adding new settings by remote
- Monitor real-time lighting usage and energy consumption data
- Utilize a future-ready platform and upgrades for superior service performance

Users access project dashboards by subscribing through the portal. After the 6 month free trial monthly fees apply. Non-subscription and subscription feature access is subject to change. Always consult Sales representation for current offering.



Network lighting controls driving demand

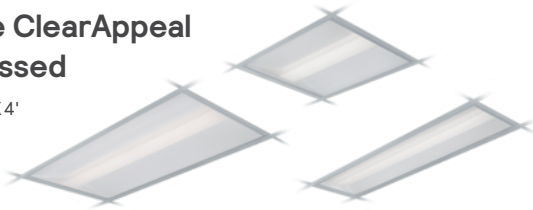
Interact Pro's system meets stringent code compliance, Title-24, qualifies for networked lighting controls rebates and other energy-efficient lighting programs.



Interact Ready connected lighting

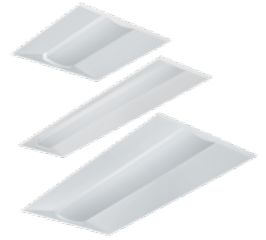
Day-Brite ClearAppeal LED recessed

2'X2', 2'X4', 1'X4'



Day-Brite EvoGrid LED recessed

2'X2', 2'X4', 1'X4'



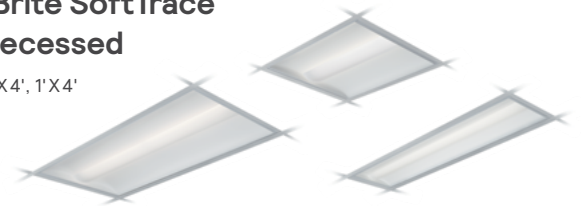
Day-Brite FluxStream LED linear strip and wall

2', 3', 4' and 8'



Day-Brite SoftTrace LED recessed

2'X2', 2'X4', 1'X4'



Ledalite BoldPlay linear suspended and wall

2' and 8'



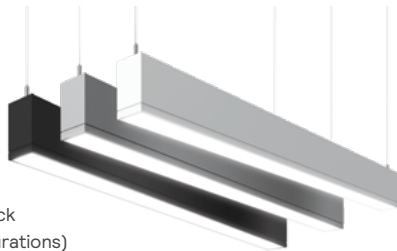
Ledalite FloatPlane linear suspended and wall

4', 6' and 8'



Ledalite TruGroove linear, recessed, suspended, wall and surface

2' - 8' (mounting dependant, check
spec. sheets for Interact configurations)



Lightolier Calculite LED downlights

4", 6" and 7" (round and square)



Philips EvoKit Click LED

2'X2', 2'X4', 1'X4'



Philips EvoKit LED retrofit kits

2'X2', 2'X4', transceiver



Additional Interact Ready indoor products are available through the specials process. Contact a Signify representative for offering and availability.

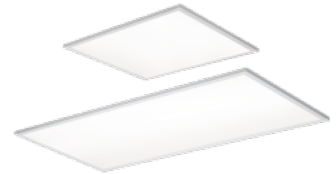
**Day-Brite FluxGrid
LED recessed**

2'X2', 2'X4', 1'X4'



**Day-Brite FluxPanel
LED recessed**

2'X2', 2'X4', 1'X4'



**Day-Brite SlimLux LED
surface**

2' and 4'



**Ledalite ArcForm
recessed**

1'X4', 2'X2'



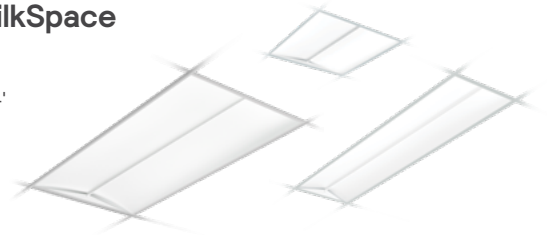
**Ledalite ModiFly
linear suspended**

2', 4', 5', 6', 8' and patterns



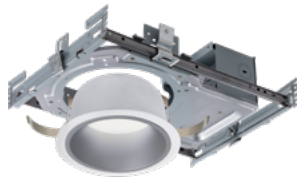
**Ledalite SilkSpace
recessed**

2'X2', 2'X4', 1'X4'



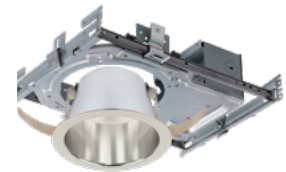
**Lightolier EasyLyte
LED downlights**

4" and 6" (round)



**Lightolier LyteProfile
LED downlights**

4" and 6" (round and square)



**Philips MasterConnect TLED
with Integrated Motion Sensing**

2', 4' and U-bend



**Philips sensors
and switches**



Find out how Interact can transform your business
www.Interact-lighting.com/pro

interact

© 2019 Signify Holding. All rights reserved. The information provided herein is subject to change, without notice. Signify does not give any representation or warranty as to the accuracy or completeness of the information included herein and shall not be liable for any action in reliance thereon. The information presented in this document is not intended as any commercial offer and does not form part of any quotation or contract, unless otherwise agreed by Signify. All trademarks are owned by Signify Holding or their respective owners.