

Quick Install Guide
Interact Pro



interact

www.interact-lighting.com

Works with

Connected lighting

PHILIPS

Contents

This guide shows a few key concepts how to get from a set of components to a fully connected lighting system.



01 Introduction



1. **Unbox**

Unpack the equipment

2. **Install**

The physical installation follows the normal installation instructions of the devices.

3. **Download**

Download and install the app on your phone and register yourself.

Note

The app guides you through the functional setup of the system and its components after installation.

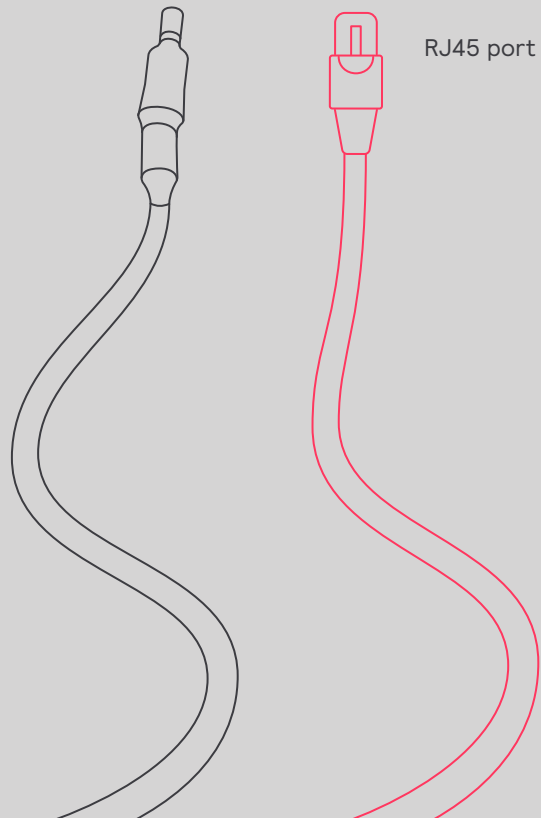
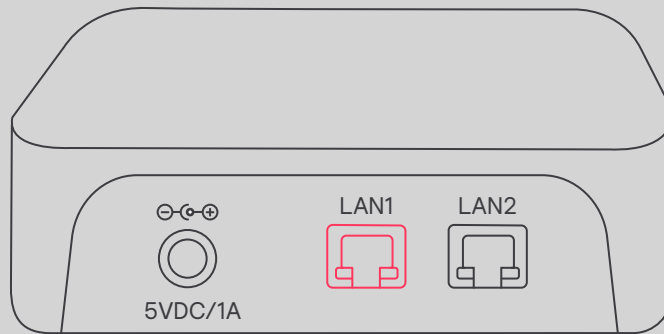
4. **Configure**

Use the app for on-site configuration work. Optionally, use the portal for off-site preparation.

5. **Manage**

Create roles to enable users in the building to control the lights.

02 Connect the gateway



Connect the gateway to the internet

The gateway needs connection to the internet. Use an Ethernet cable to connect the device to an Ethernet socket of the IT network in the building.

Note

The maximum length of the ethernet cable is 100 m.

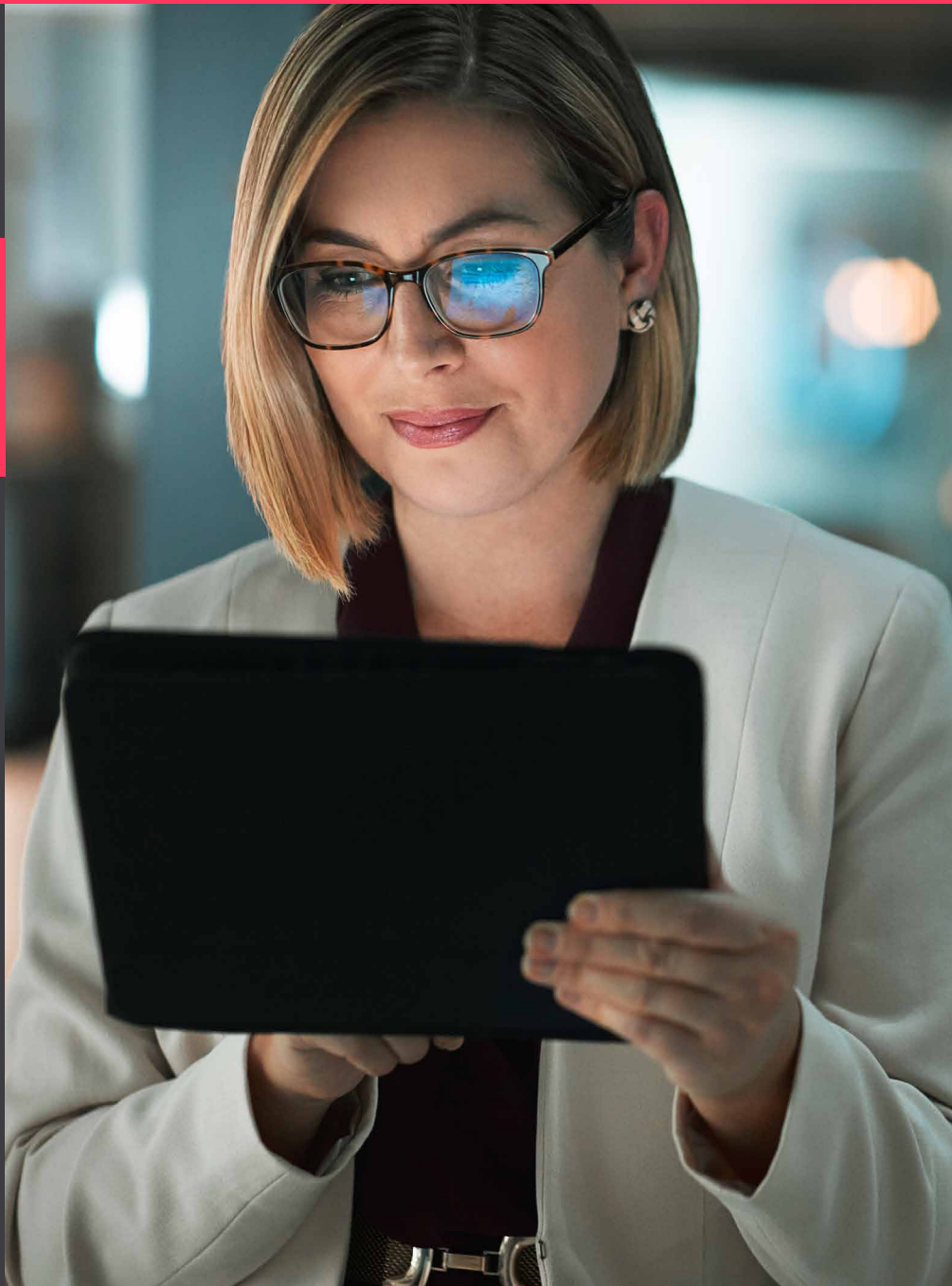
The gateway needs to receive its address from a DHCP-server on the network it is connected to; a static IP-address doesn't work.

The gateway creates a connection to the Signify cloud using port 443. This port is also used for secure web browser connections. To make sure this connection can be established:

1. Connect a PC via an Ethernet cable.
2. Launch a web browser.
3. Go to a secure web page (for example <https://www.signify.com>).



02 Connect the gateway

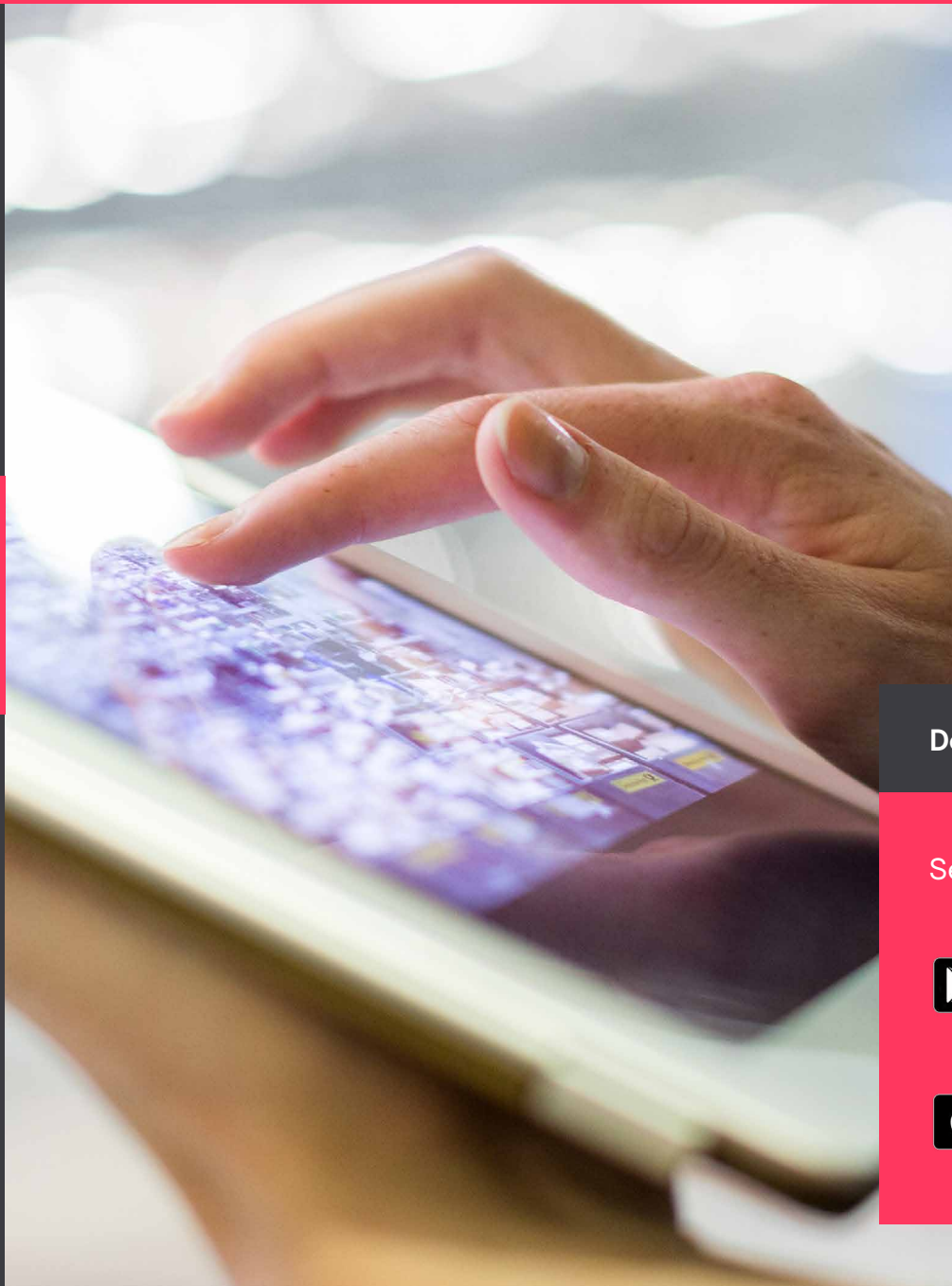


Sometimes more dedicated IT support is required. This is especially the case when a firewall prevents the gateway to connect, or when MAC filtering is being applied. In case of a firewall, make sure to white list the following connections:

- sme.interact-lighting.com
for port 80 and 443
- mqtt.sme.interact-lighting.com
for port 443
- port UDP 123 open for synchronizing
Network Time Protocol (NTP)

When powered and connected, the three LED indicators turn on solidly.

03 Get started with the app



Register to the system

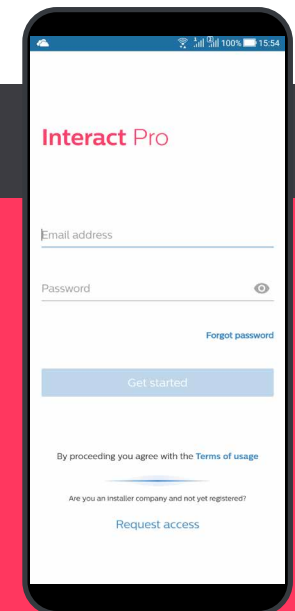
The Interact Pro app is the tool to configure the system after install.

- Download the app.
- When you have received an invitation email as installer, click the link to register. Alternatively, register yourself via the app by tapping **Request access**.
- Now you can login to the app.

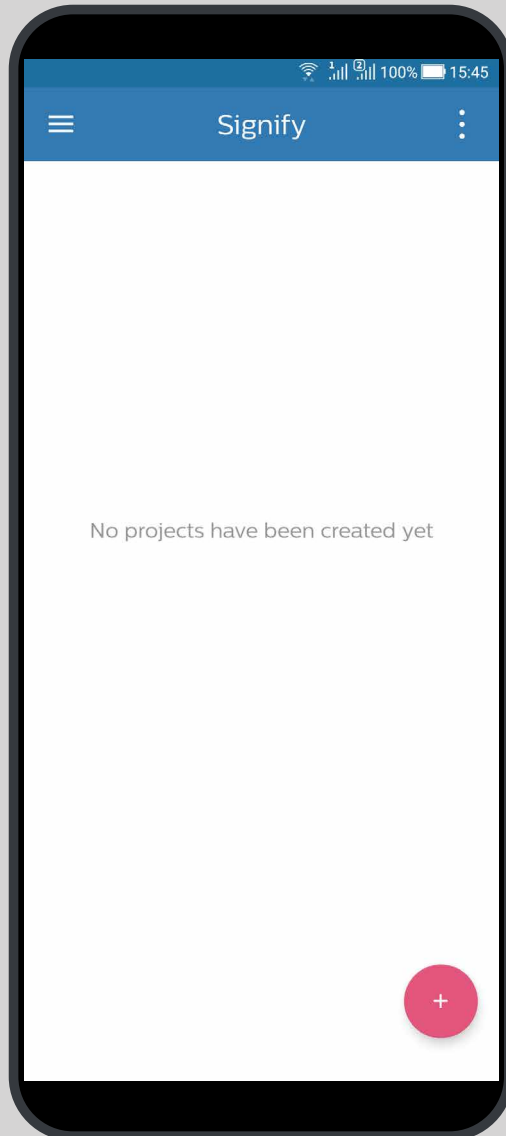
Download the Interact Pro app



Search for 'interact pro'.



03 Get started with the app



Create a new project

1. Log in to the Interact Pro app. Use the email address and password you just registered.
2. If you see the message 'No projects have been created yet', tap the red + button to add a new project.
3. Fill in the project details where the installation takes place. Tap **Next** to continue.

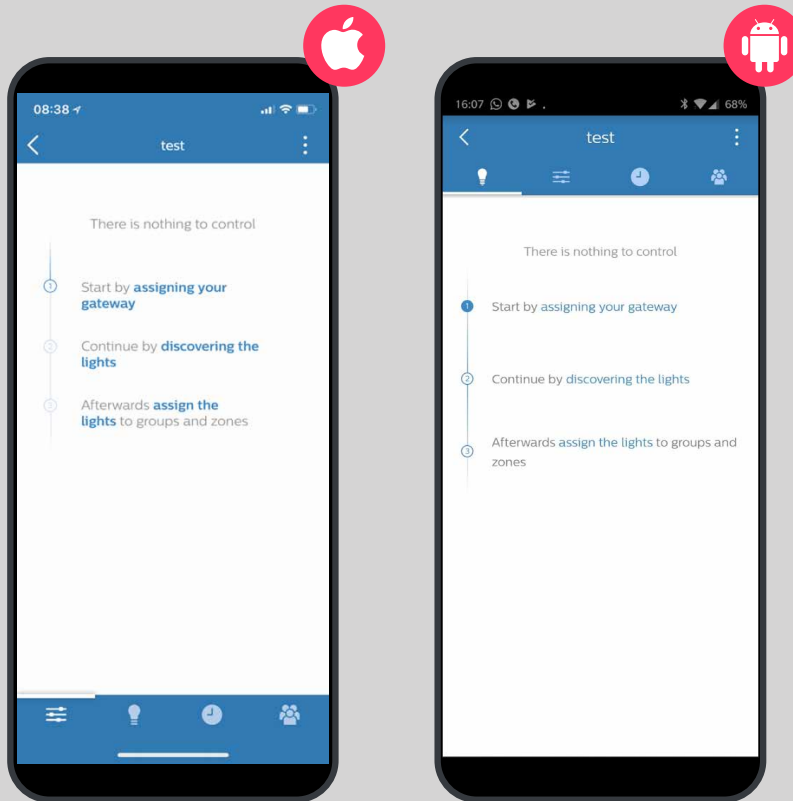
In the app, you will see the project listed with its name, its creation date, type and status, which should be preparation.

4. Select the project and you will be able to start commissioning the project.

Note

The app is mostly de-activated as it is coupled to different roles, as self-registration makes you a service provider. For installation purposes, you need to be registered with the installer role. You will automatically obtain installer role rights by creating a new project.

04 Configure a project using the app



Initial setup

After selecting/creating the project in the app, follow the steps as indicated:

1. Assign the gateway.
2. Discover the lights.
3. Assign the lights in groups and optionally zones (in a group).

Note

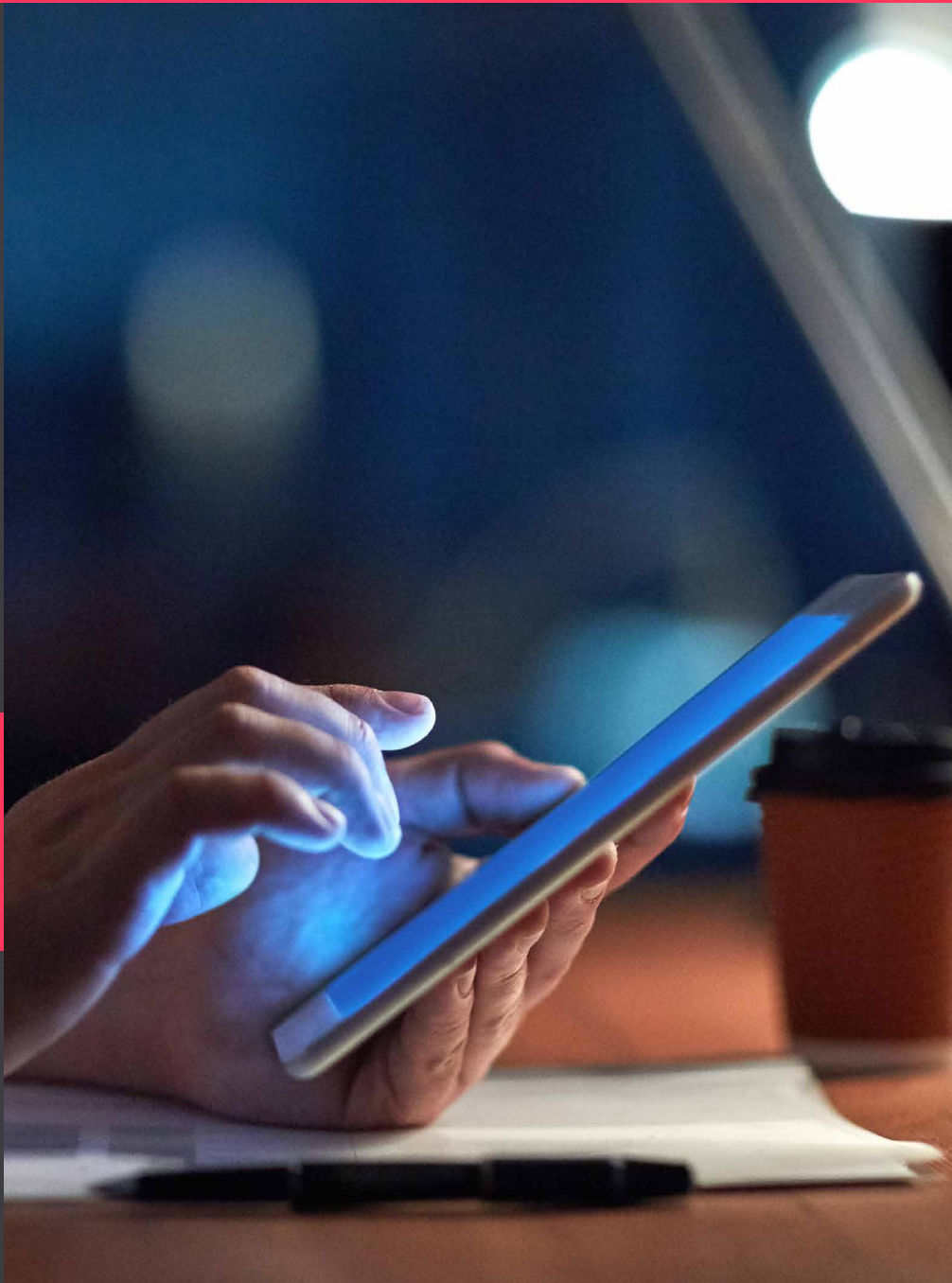
The app can now be used to control the lights (ON/OFF/dimming).

Finalize the design

1. Add sensors and switches.
2. Create scenes and schedules.



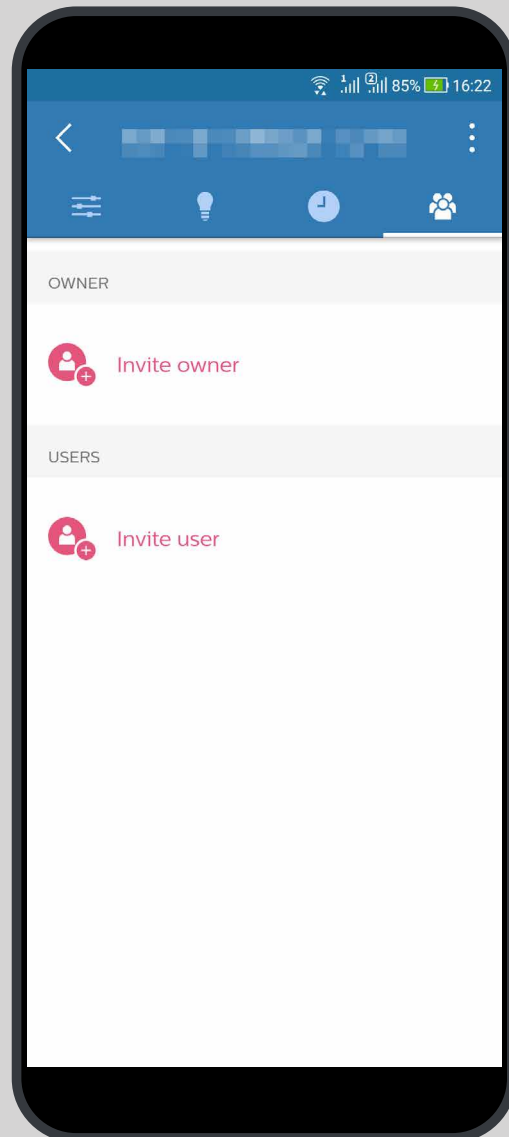
04 Configure a project using the app



Notes


- If assigning of the gateway fails, manually type the MAC address of the device. Reset the gateway if both methods are not successful.
- If discovery of the lights is not successful for any of the lights, switch off the power and wait 10 seconds before switching it back on. Repeat the discovery process.

05 Manage your system



Add owner account

When you are finished with assigning the lights and configuring the system, make sure that you create an owner account. The owner uses the same app to add other users and to control the lights.

1. Tap the  icon
2. Tap Invite owner and enter the email address. Tap **Next**.
3. Fill in the form with company details. Tap **Request**.

The owner receives an email with an activation link. You can help him with registering to the system. You can also explain how to add or delete users. This gives employees of the owner access to the system and the ability to control the lights.



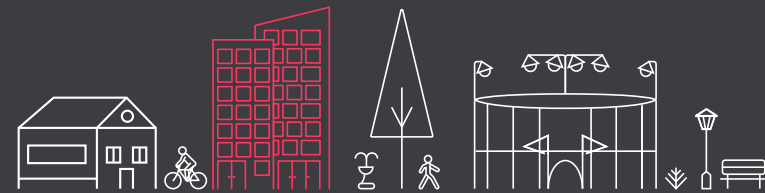
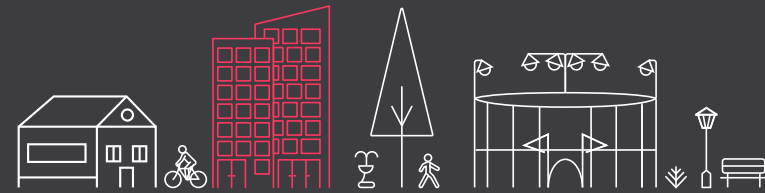
interact

Need help?

Contact us via

<https://www.signify.com/global/contact.cs>

Select your country and click **Contact**.



Learn more about Interact

www.interact-lighting.com

© 2019 Signify Holding. All rights reserved. Specifications are subject to change without notice. No representation or warranty as to the accuracy or completeness of the information included herein is given and any liability for any action in reliance thereon is disclaimed. All trademarks are owned by Signify Holding or their respective owners.